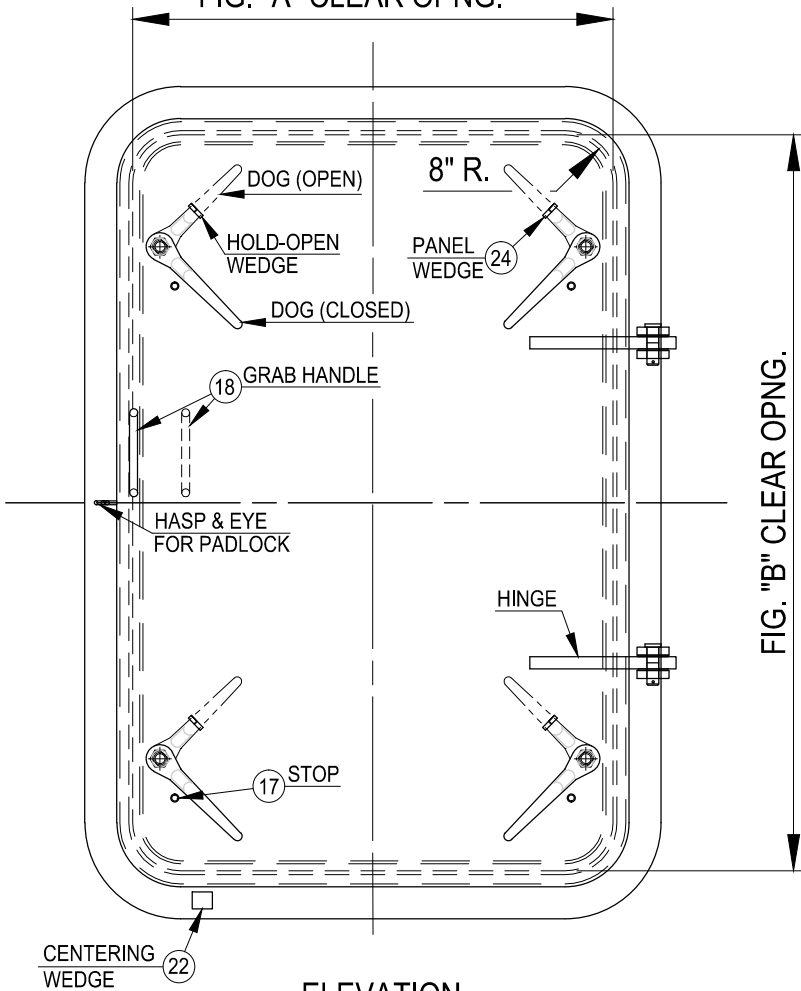
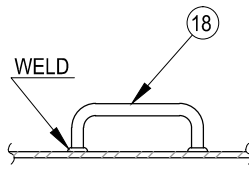


FIG. "A" CLEAR OPNG.

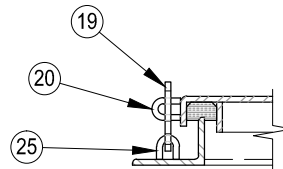


ELEVATION

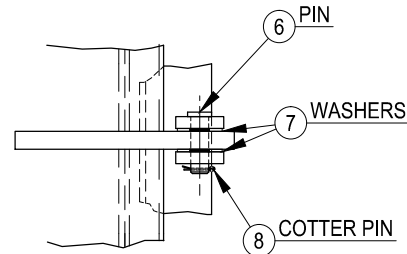
RIGHT HAND DOOR SHOWN



DETAIL OF GRAB HANDLE



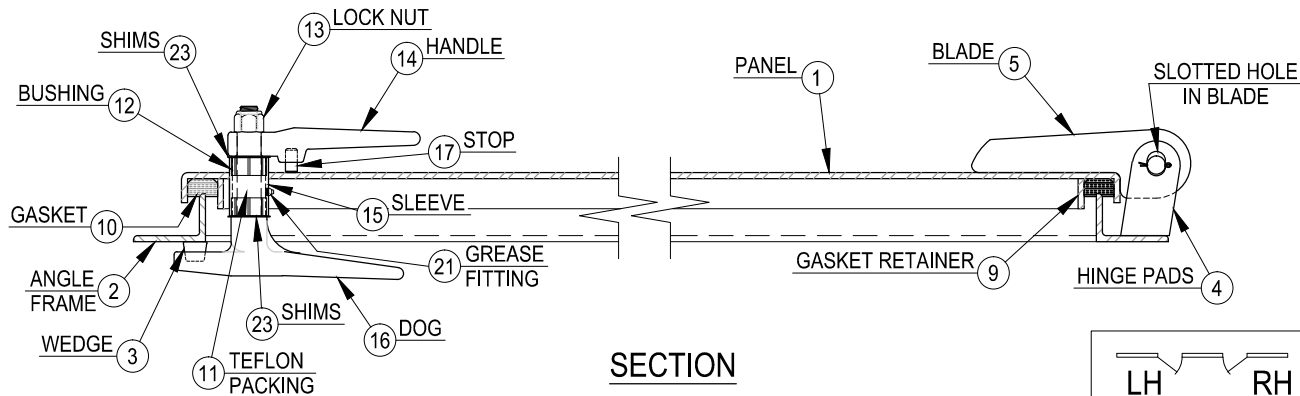
DETAIL OF HASP



DETAIL OF HINGE

SCHEDULE OF MATERIALS

| PC. | MATERIAL     | REMARKS |
|-----|--------------|---------|
| 1   | MILD STEEL   |         |
| 2   | MILD STEEL   |         |
| 3   | FORGED STEEL |         |
| 4   | MILD STEEL   |         |
| 5   | MILD STEEL   |         |
| 6   | BRASS        |         |
| 7   | TEFLON       |         |
| 8   | STAINLESS    |         |
| 9   | MILD STEEL   |         |
| 10  | NEOPRENE     |         |
| 11  | TEFLON       |         |
| 12  | DELRIN       |         |
| 13  | PLATED STEEL |         |
| 14  | FORGED STEEL |         |
| 15  | MILD STEEL   |         |
| 16  | FORGED STEEL |         |
| 17  | MILD STEEL   |         |
| 18  | MILD STEEL   |         |
| 19  | MILD STEEL   |         |
| 20  | MILD STEEL   |         |
| 21  | PLATED STEEL |         |
| 22  | MILD STEEL   |         |
| 23  | STAINLESS    |         |
| 24  | MILD STEEL   |         |
| 25  | MILD STEEL   |         |



SECTION

LH RH

CEN-TEX MARINE FABRICATORS, INC.

SMITHVILLE, TEXAS

WATER TIGHT DOOR

DWG. NO.: 101-MS